

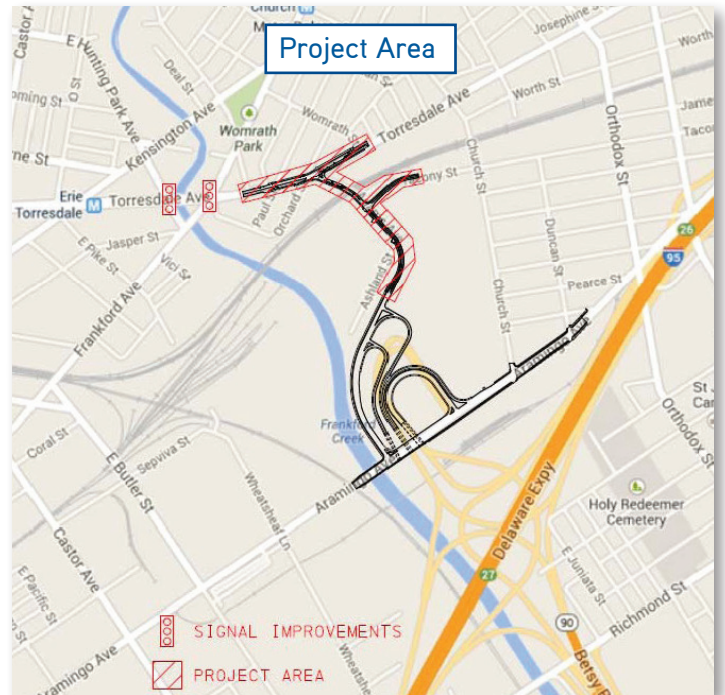


Project Description

This project involves the Adams Avenue connection for vehicles traveling from Torresdale Avenue to Interstate 95, the Betsy Ross Bridge, and Aramingo Avenue. Existing Adams Avenue will be reconstructed from Torresdale Avenue to Ashland Street. Adams Avenue will continue along a new alignment from Ashland Street to Ramp D of the Betsy Ross Interchange.

Additional improvements include:

- Multi-use trail
- Street lighting
- Replacement of existing storm drainage facilities
- Signal improvements and additional lanes at the intersection of Torresdale Avenue and Adams Avenue
- Possible signal improvements at the intersections of Torresdale with Frankford Avenue and Hunting Park Avenue
- Proposed signal at the intersection of Adams Avenue and Tacony Street



Project Purpose

The Adams Avenue Connector project will provide an efficient transportation facility linking I-95 to the local street system at Torresdale Avenue via Adams Avenue. The few access points from the city street system to I-95 results in motorists driving through local streets and a considerable amount of truck traffic using local streets to reach industrial areas. This project will alleviate vehicular and truck traffic from local streets by providing more direct access to and from the interstate and the Betsy Ross Bridge.

Project Development

The Adams Avenue Connector is in preliminary design. During this stage of design, the proposed roadway alignment and engineering plans are developed based on environmental and property constraints. Input is gathered from stakeholders including public officials, city agencies, and the community.

Current Project Schedule

Preliminary Engineering and Environmental Activities	Present
Begin Final Design	Fall 2014
Begin Right-of-Way Acquisition Process	Summer 2015
Bid Project	2018
Adams Avenue Construction Begins	2018

All dates are planned and are subject to change based on funding.

Next Steps

- Public Outreach
- Engineering Survey
- Geometry Alternatives
- Traffic Data Collection and Analysis
- Environmental Assessment
- Right-of-Way and Deed Research

For additional information:

Paul Shultes, P.E.
 PennDOT District 6-0
 7000 Geerdes Blvd
 King of Prussia, PA 19406
 610-205-6870
 c-pshultes@pa.gov

Adams Avenue Connector Project Proposed Typical Sections

